

WATERFRONT, CREATIVE & PROFESSIONAL WORK SPACE AVAILABLE FOR LEASE IN THE VIBRANT, HISTORICAL EASTPORT NEIGHBORHOOD

3,410 SF +/- OFFICE/PRODUCTION SPACE



222 SEVERN AVE / ANNAPOLIS, MD

BUILDING 2



➤ PROPERTY DETAILS

Type	Office/Production Space
Zoning	Office or Retail (Preference for Maritime)
Size	3,410 +/- Rentable Square Feet
Ceiling Height	8'7" – 12'6"
Renovations	2019
HVAC	Central Air Conditioning, Gas-Fired Heat
Building Hours	24 Hours, Private Entrance
Internet Providers	Verizon Fios and Comcast
Parking	Free Surface Parking; 4:1,000
Public Transportation	City of Annapolis Buses
Amenities	Waterfront Picnic Area, Walkable to Downtown, Water Taxi Stop, Award-Winning Dining

➤ SPACE DETAILS

ADA	Fully Accessible
Offices	6 Offices
Common Space	7 Built-In Workstations & Space for 12 More
Lounge Area	8' Overhead Door Perfect for an Open-Air Creative Environment
Reception Area	Large Reception Space
Conference Room	2 Large Conference Rooms or Production Spaces
Restrooms	2 Private Restrooms
Kitchenette	With Eat-In Space
Signage	Exterior Building and Complex Entrance Signage

222 SEVERN AVE / ANNAPOLIS, MD
BUILDING 2

222
Severn
W&P Nautical
Property Management

ROSSO
COMMERCIAL
real estate services



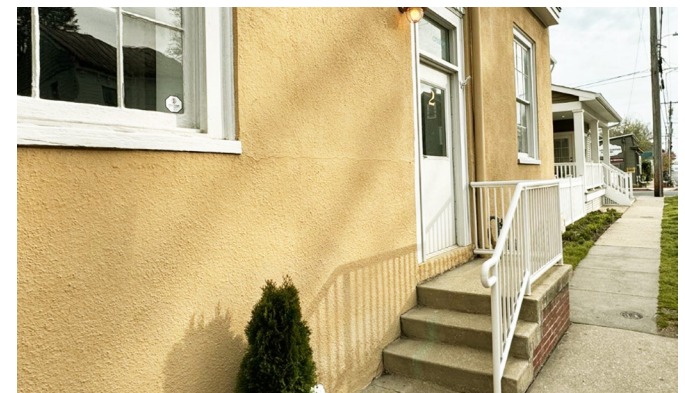
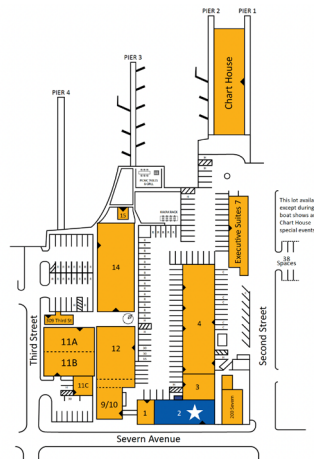
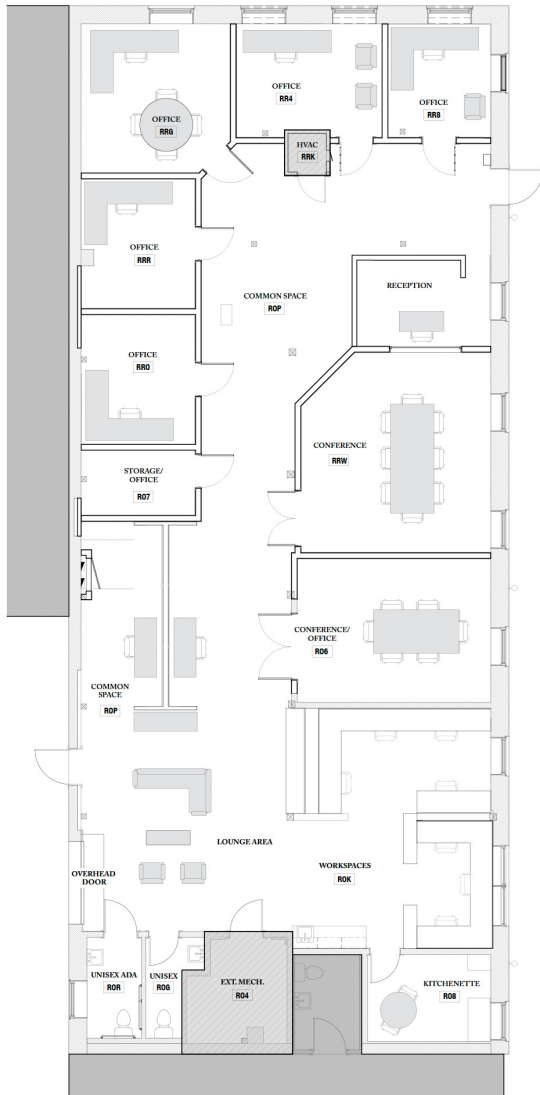
While we have no reason to doubt the accuracy of any of the information supplied, we cannot, and do not, guarantee its accuracy. All information should be independently verified prior to a purchase or lease of the property. We are not responsible for errors, omissions, misuse, or misinterpretation of information contained herein and make no warranty of any kind, express or implied, with respect to the property or any other matters.

MOVING COMMERCIAL REAL ESTATE GOALS FORWARD.

222 SEVERN AVE / ANNAPOLIS, MD
BUILDING 2

**222
 Severn**
 W&P Nautical
 Property Management

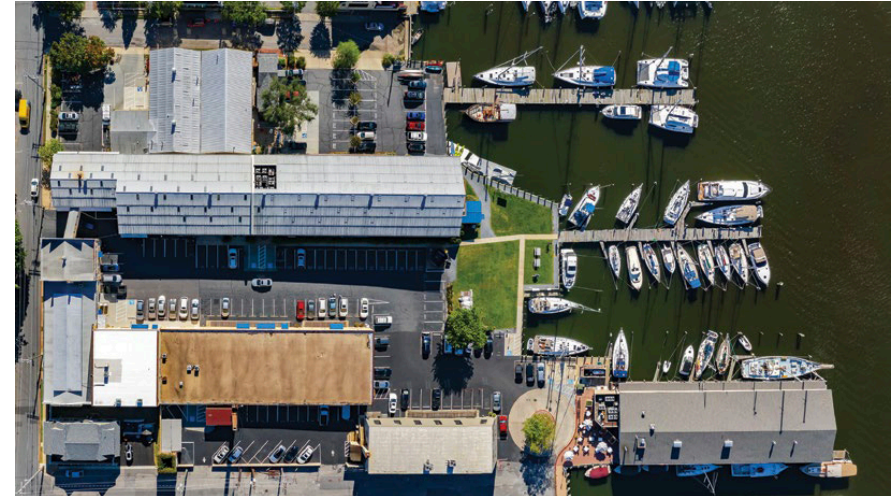
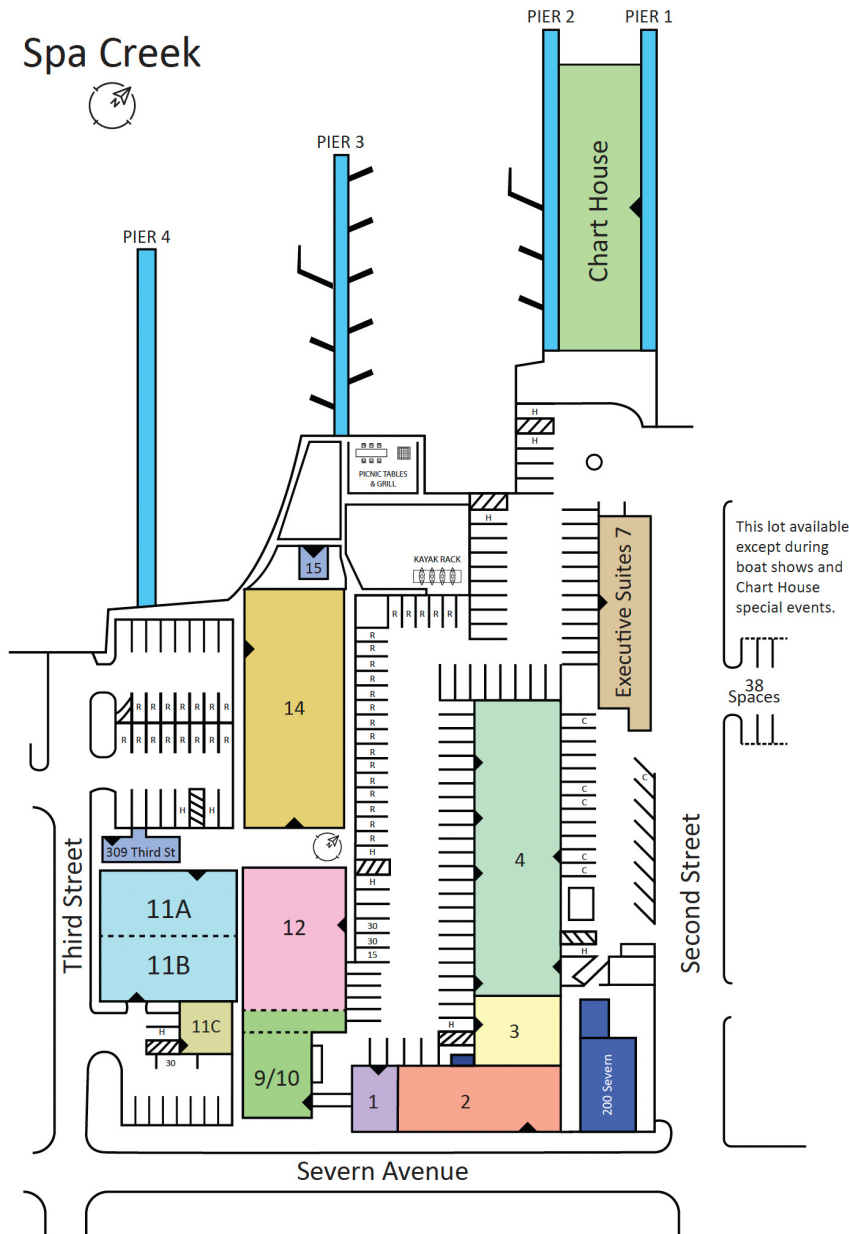
**ROSSO
 COMMERCIAL**
 real estate services



While we have no reason to doubt the accuracy of any of the information supplied, we cannot, and do not, guarantee its accuracy. All information should be independently verified prior to a purchase or lease of the property. We are not responsible for errors, omissions, misuse, or misinterpretation of information contained herein and make no warranty of any kind, express or implied, with respect to the property or any other matters.

MOVING COMMERCIAL REAL ESTATE GOALS **FORWARD.**

SITE PLAN



COMPLEX HIGHLIGHTS

- Waterfront Offices and Executive Suites
- Marina and Boat Slips
- Ample Free Parking
- Overlooking Historic Downtown Annapolis and the U.S. Naval Academy
- Fabulous Restaurants, Pubs, and Coffee Shops
- Walkable to State House and Courthouse
- Water Taxi on Property
- On-Site Property Management & Maintenance
- Beautiful, Waterfront Picnic Area

PROPERTY HISTORY

The historic complex located at 222 Severn has played a pivotal role in the maritime industry for over a century, witnessing the evolution from fishing to marine construction to recreational boating. With a rich history deeply intertwined with maritime activities, the site has been a cornerstone of the local economy and culture.

Owners of the complex have adapted the property and its uses to meet changing times and needs. Rather than succumbing to obsolescence, adaptive reuse strategies have breathed new life into the original structures and buildings. This approach has preserved the historical significance of the site while providing practical and useful space for today's businesses to flourish. The complex remains a vibrant hub for a variety of enterprises.



► THE EARLY DAYS

- **1750-1855:** Oystermen, crabbers and fishermen live and work at 222 Severn and in Eastport spending their days in the far reaches of the Chesapeake Bay.
- **1855:** The first official business is established here – The Annapolis Glass Company.
- **1904:** The Chance Marine Construction takes over the property, building Chesapeake Bay workboats.
- **1914:** At the start of WWI, Chance is commissioned to build 110' wooden submarine chasers
- **1937:** The Annapolis Yacht Yard is founded, and they begin building exclusive luxury yachts.
- **1940:** The AYY begins building 70 foot Vosper Torpedo Patrol Boats for the British Navy, and goes on to build a total of 28 for the War effort. The "Big Shed" building still standing today is constructed for this purpose.
- **1940:** The famous "America" yacht – the first to win the "America's Cup" – is brought here for repair. However, she meets with tragedy on March 29, 1942 when an unusually heavy snowfall collapses the temporary storage structure and crushes the boat.
- **1943:** The AYY builds another 100 PT boats for the Russian Navy.



**ADAPTIVE REUSE STRATEGIES
HAVE BREATHED NEW LIFE INTO
THE ORIGINAL STRUCTURES AND
BUILDINGS.**

PROPERTY HISTORY

▶ THE TRUMPY YEARS

- **1948:** The Trumpy family buys the property and establishes “John Trumpy & Sons, Inc.” They are known around the world for their exquisite hand-crafted yachts of mahogany and bronze. The most famous is “Sequoia” built for President John F. Kennedy.
- **1951:** MSB Minesweepers are built by John Trumpy & Sons, Inc. for the Korean War.
- **1962:** A huge fire threatens to destroy all of Eastport.
- **1973:** The last Trumpy yacht is made, and the yard is closed for good.



WITH A RICH HISTORY DEEPLY INTERTWINED WITH MARITIME ACTIVITIES, THE SITE HAS BEEN A CORNERSTONE OF THE LOCAL ECONOMY AND CULTURE.

▶ THE TEMPLETON YEARS

- **1974:** The Templeton family purchases a two-thirds share of the Trumpy property and begins to restore the old buildings for maritime fabrication, repair and office space.
- **1999:** 222 Severn included in the National Register of Historic Places for its role in shaping the maritime history of Annapolis.
- **2006:** The “Big Shed” is renovated into Class-A office space – keeping the integrity of its history – complete with the entire original shell, steel beams and three lobby history exhibits.





SPA CREEK

THIRD STREET

SEVERN AVENUE

AREA OVERVIEW / VIEW TOWARDS DOWNTOWN ANNAPOLIS

- 1. State Capital
- 2. Main Street
- 3. Annapolis Waterfront Hotel
- 4. Choptank
- 5. Annapolis Market House
- 6. Annapolis City Dock
- 7. U.S. Naval Academy
- 8. Chart House Prime
- 9. Bread and Butter Kitchen
- 10. Annapolis Harbor Boat Yard





4

5



6



8



3



2



1



7

SPA CREEK

SEVERN AVENUE

AREA OVERVIEW / VIEW TOWARDS EASTPORT

- 1. Ruth's Chris Steak House
- 2. Lewnes' Steakhouse
- 3. Boatyard Bar & Grill
- 4. Blackwall Hitch
- 5. Mercedes-Benz of Annapolis
- 6. Carroll's Creek Cafe
- 7. O'Learys Seafood
- 8. Annapolis Yacht Club



222 Severn

W&P Nautical
Property Management

222 SEVERN AVE / ANNAPOLIS, MD

Ryan Brassel
ryan@rossocre.com
C | 410.507.3144

John A. Rosso, SIOR
john@rossocre.com
C | 410.802.1909



One Annapolis Street | Suite 101 | Annapolis, MD 21401 | www.RossoCRE.com

While we have no reason to doubt the accuracy of any of the information supplied, we cannot, and do not, guarantee its accuracy. All information should be independently verified prior to a purchase or lease of the property. We are not responsible for errors, omissions, misuse, or misinterpretation of information contained herein and make no warranty of any kind, express or implied, with respect to the property or any other matters.